



L'Art. SDM è un rilevatore di presenza applicabile a qualsiasi modulo/strip LED, in grado di captare ogni movimento all'interno del raggio d'azione e attivare l'accensione del corpo illuminante.

La versione di serie è disponibile con lente angolo 60°; su richiesta sono disponibili angolature differenti.

La regolazione dei tempi di accensione è di 3min. (versione standard), su richiesta sono possibili differenti regolazioni predefinite.

E' disponibile con involucro in policarbonato con grado di protezione IP65.



The Art. SDM is a presence detector applicable to any LED modules/strips, able to detect any movement within the range of action and automatically activate the switch on of the luminaire.

The standard version is available with 60° angle lens; different angles are available on request.

The time setting ON is 3minutes, on request different default time settings are possible.

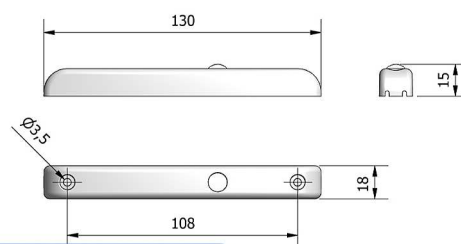
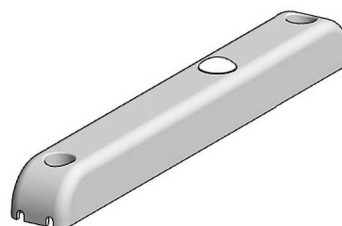
It is available with casing made of polycarbonate and degree of protection IP65.

Safety

According to	EN61347-2-13 (2007-09)
Reverse polarity protection	Diode Series
Over Current	Fuse Track
Over voltage input	Diode Zener
Electric Strength	Class III
Mounting surface	EN60598-1:2008 par 12.4

Technical data

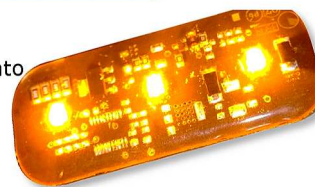
Max load current	1.5 A
Current	at 27.6Vdc = 0.015A (with load off)
Supply rated voltage	9 ÷ 33 Vdc
ta. range temperature	-20 ... +40°C
Angle	60° (±30°)
Time setting ON	3 min
Distance of action	10 m
Weight	10 gr



Plafoniera indicata per illuminazione di segnalazione ad intermittenza. Disponibile con resina trasparente protettiva o con lente in policarbonato trasparente, protezione IP67.



Surface-mounted light particularly developed for signal blinking light. Available with clear waterproof resin or polycarbonate lens, waterproof IP67.



Safety

According to	EN 60598-0-0 (1997-06) EN 60598-0-0/A1 (1998-02)
Input protection	Diodo series
Mounting surface	EN 60598-1:2008 PAR.12.A

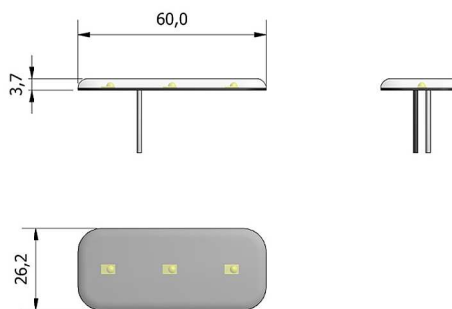
Technical data

MAX Absorbed power at...	13.8Vdc = 6.2W
Supply rated voltage	10.5...14.5Vdc
MAX Input Current at...	13.8Vdc = 0.45A
Degree of protection	IP67
ta. range temperature	-30...+40°C
tc. Max case temperature	+ 70°C
Led color	CW, NW, WW, Red, Blue, Amber
Lumen	CW - NW - WW 405 lm RED 120lm BLUE 120lm AMBER 240lm
Weight	20gr
Connection	Wiring cable

Lighting efficiency

Distance (m)	
0,5	510 lx
1	128 lx
1,5	57 lx
2	32 lx
2,5	21 lx

Art. 37 resin



Art. 37 mask Omologato R65 Type-approved R65

